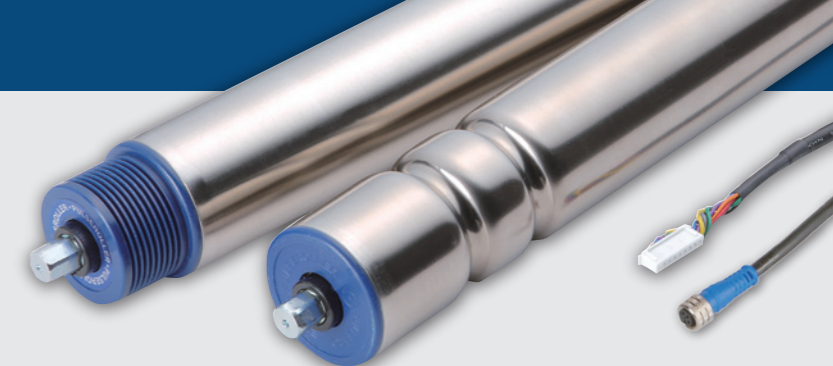


Drives

SENERGY / SENERGY-Ai

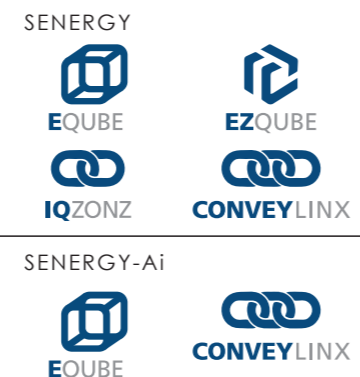


Product information

General information

- CE certified, RoHS compliant, IP54 rating
- ETL Certified to UL Standards (Optional)
- Tube material: Mild steel, zinc plating / Stainless steel (SUS304)
- Roller diameter: 48.6 mm (1.9"), 50.0 mm (1.97")
57.0 mm (2.24"), 60.5 mm (2.38")
- Min. roller length: Refer to the "Available minimum roller length table" below
- Max. roller length: 1000 mm *Contact us for longer than 1000 mm.
- Cable length: 600 mm (SENERGY) / 1000 mm (SENERGY-Ai)
*Contact us for extension cables
- Motor connector: JST (SENERGY) / M8-4pin (SENERGY-Ai)
- Operation: 0.5 sec ON / 0.5 sec OFF duty cycle (Minimum)
or continuous within rated load

Compatible Control Technologies



Technical data

	ECO mode	BOOST mode	BOOST-8 mode
Voltage	DC24V		
Nominal output	40W	50W	50W
Rated current	2.5A	3.5A	3.5A
Starting current	3.0A	5.0A	8.0A
Ambient temperature	14 ~ 104°F		
Ambient humidity	10 ~ 90% RH (No condensation)		

Available minimum roller length

Roller diameter	Speed Code	Interlocking option		
		Plain straight	Micro V-pulley	Round Groove
SENERGY 48.6 / 50.0	15, 20, 25	325	318	357
	35, 45, 60, 75	301	294	333
	95, 125, 175, 215	274	267	306
SENERGY-Ai 48.6 / 50.0	15, 20, 25	331	324	363
	35, 45, 60, 75	307	300	339
	95, 125, 175, 215	280	273	312

Unit: mm

*We support shorter length than those listed above using specially made components. Contact us for more details.
Brake not available for Ai rollers

Roller weight table

Diameter	Speed code	Roller length (mm)							
		300	400	500	600	700	800	900	1000
φ 48.6	15, 20, 25	4.4	4.6	5.1	5.5	5.7	6.2	6.4	6.8
	35, 45, 60, 75	4.0	4.4	4.9	5.1	5.3	5.7	6.0	6.4
	95, 125, 175, 215	3.7	4.0	4.4	4.6	5.1	5.5	5.7	6.2
φ 50	15, 20, 25	4.4	4.9	5.3	5.5	6.0	6.4	6.6	7.1
	35, 45, 60, 75	4.0	4.4	4.9	5.3	5.5	6.0	6.4	6.6
	95, 125, 175, 215	3.7	4.2	4.4	4.9	5.3	5.7	6.0	6.4
φ 57	15, 20, 25	5.3	5.7	6.2	6.6	7.1	7.5	7.9	8.4
	35, 45, 60, 75	4.9	5.3	5.7	6.2	6.6	7.1	7.5	7.9
	95, 125, 175, 215	4.6	5.1	5.5	6.0	6.2	6.6	7.1	7.5
φ 60.5	15, 20, 25	6.8	8.0	8.8	9.9	11.0	11.7	12.8	13.7
	35, 45, 60, 75	6.4	7.5	8.4	9.5	10.4	11.5	12.4	13.5
	95, 125, 175, 215	6.2	7.0	8.2	9.0	10.1	11.0	12.1	13.0

*Above values are only approximate. Contact us for more details. Unit: lbs

Wall thickness

Diameter	48.6	50.0	57.0	60.5
Thickness	1.4	1.5	1.5	3.25

Unit: mm

Center point load capacity

Diameter	Length (mm)	300	400	500	600	700	800	900	1000
		48.6	154	132	110	88	77	66	55
50.0	176	154	132	121	110	99	88	77	
57.0	220	220	176	176	132	132	110	110	
60.5	352	352	286	286	220	220	176	176	

Unit: lbs